

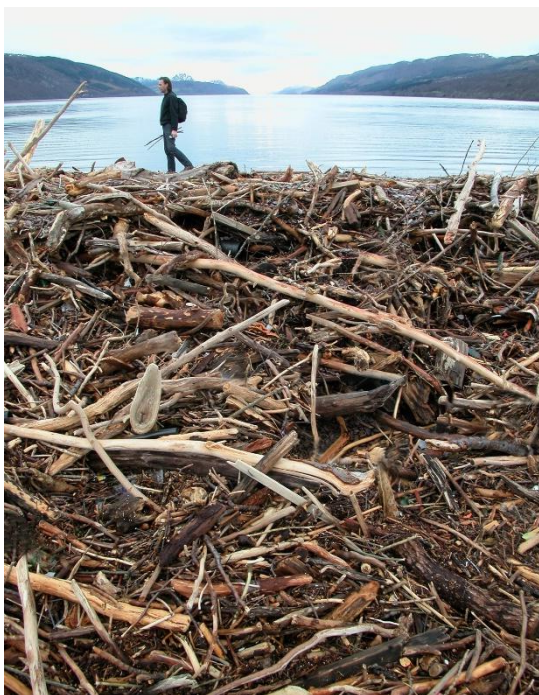
Bio - Leon Patchett

Leon Patchett was born in Peterborough Cambridgeshire. England 1966. In 1990 he graduated from Central/St. Martins School of Art & Design with a B.A. Hons Degree in Ceramics. Working from his studio in Cromarty, Scotland since 2002 he has exhibited home and abroad. His latest solo show currently occupying the main gallery at Inverness Museum. He is a sculptor and a ceramicist who also has a distinctive approach to his 2-dimensional work all of which play a significant role in his creative life. International residencies & symposiums have been a major inspiration as visits to in North Carolina, Spain, Macedonia, Bosnia, and Finland have helped to develop his artistic process. The long-term collaboration with Finnish artists has been a constant since 2010 and is a founding member of The Ripple/Kare Project which has focused on water to inspire new work. Ideas of recycling, repurposing, and reusing materials found in nature as well as in urban setting have been an inspiration for have been for over 2 decades. His approach provides an alternative view of using found or discarded material revealing his personal vision of contemporary sculpture making.

www.leonpatchett.com

Instagram. @leon.patchett

Facebook. Leon Patchett Artist



Collecting at Dores, Loch Ness. Scotland 2005



Ripple Kare Project. Norup Sawmill Residency 2015. Making Clay Forms for Water Project



No Boundaries residency North Carolina 2009



No Boundaries Residency 2010. Finished sculpture made from found wood photographed in the dunes on Bald Head Island



Processing reed



Finland 2010. Untitled Sculpture - found wood and common reed